

The ACS Connection

Volume 7, Issue 13 • 1st Quarter 2004



Raytheon Maintains & Improves Military Readiness with Lesson-learned Training

Ft. Irwin Division Using AutoEDMS to Manage Simulated War Environment

Out in the high desert of Ft. Irwin, California, the U.S. Army hones their combative skills with mission training and feedback in a simulated war environment. This “lesson-learned” training is essential in providing soldiers with the skills necessary to maintain and improve their military readiness, before their boots hit the ground.

Headquartered in Reston, VA, Raytheon Technical Services Company (RTSC) operates in 50 states, 32 countries, and seven continents. RTSC, Range Technical Services, a Department of Defense (DoD) government contractor at Fort Irwin, California, is using AutoEDMS to manage the 11,000+ library of drawings that are necessary to operate and maintain this war-fighting training simulation system, which supports over 2,000 players, 10 times a year.

As the nation’s premier operator of DoD ranges and provider of technical support services to the Federal Aviation Administration, RTSC provides technical, scientific, and professional services for defense, federal, and commercial customers worldwide.

The Business Need

What initially started as project to provide a solution for version control of Raytheon’s 11,000+ library of drawings for eight Engineering and Configuration Management users and a single database, ended up growing to support just under 30 users, and four distinct databases. “Prior to implementing AutoEDMS, the check-out, revision control, and the manual version



Raytheon . . . continued on page 2

Contents

Raytheon . . . <i>Improves Military Readiness</i>	1
Get Trained! <i>2004 Schedule</i>	1
Dr. ACL — <i>Navigator & FastFind</i>	3

Get Trained!

Four times a year, ACS provides 3-day, hands-on, instructor-led, classroom training for the person(s) who will be installing, supporting and/or managing AutoEDMS. Here’s the training schedule for 2004:

System Administrator

February 25th - 27th
Redondo Beach, CA

System Administrator

May 12th - 14th
Detroit, MI

Advanced Developer

August 25th - 27th
Redondo Beach, CA

System Administrator

October 20th - 22nd
Redondo Beach, CA

For additional details, contact Debbie at (310) 755-6040. *Learn more — get trained!* **End**



Jon E. Nicholson II —
Raytheon's RTSC-NTC-IS
Configuration Manager

Raytheon . . . cont. from page 1

release procedures were extremely inefficient by comparison," recounted Jon Nicholson, RTSC-NTC-IS Configuration Manager for Raytheon, who was directly involved in the AutoEDMS implementation.

Continuing, Nicholson explained, "Our databases are managing documentation developed in all Microsoft Office applications, as well as Visio and AutoCAD. Each database has unique Forms and workflow processes created with specific regard to the management of the document content control. The four databases provide additional management of library System Publications, administrative SOPs and exhibits, and business correspondence and project tracking."

"Future plans include further licensing deployment across this site, as well as further customization of the drawing database capabilities to include an automated drawing

tree reporting function — leveraging captured Next Assembly data," says Nicholson.

Before AutoEDMS

"Prior to the implementation of AutoEDMS," notes Nicholson, "our library documentation content maintenance employed a labor-intensive manual directory and file management approach, coupled with a FoxPro migrated Microsoft Access database version control data capture application. We had no direct-correlation of management data and documents."

"Version control was also a manually labor-intensive process," describes Nicholson. "While documents could easily be retrieved through the server-based directory structure to support efficiency for our Engineering efforts, the back-end Configuration Management efforts were excessively cumbersome in validating documentation being requested for release into our baseline. We spent many extra hours, per individual drawing sheet, validating revision data inclusion, and confirming data content was sourced from an appropriate baseline, while continually monitoring multiple sheet revision projects."

Key Benefits

"AutoEDMS' customizable environment allows us to marry document-specific

maintenance data with its associated document," says Nicholson. "We have a very specific contract compliance vision managing DoD technical system documentation. Our customer has confidence in library maintenance of our documentation management approach, because of the customization allowing our operation to satisfy their requirements regarding control and reporting."

ROI Achievements

"As an estimate," explains Nicholson, "AutoEDMS has improved our configuration and library maintenance efficiency in decreasing our labor by about 50% in just managing drawings library content through process improvements afforded through a customized AutoEDMS database. And . . . remember, there are also dollars associated with a Customer's confidence in your document management efforts."

Words of Advice

"Ensure a clear game plan in customization requirements, implementing, and deploying a system," advises Nicholson. "Most importantly, get your users' buy-in! For a successful roll-out, it's paramount that your users are involved, not only with input in the customization, but in offering input to deployment. Finally, take ownership of the tool — if you feel you own it, you will make it the best possible tool in managing your documents." **End**

Ask the ACL Doctor

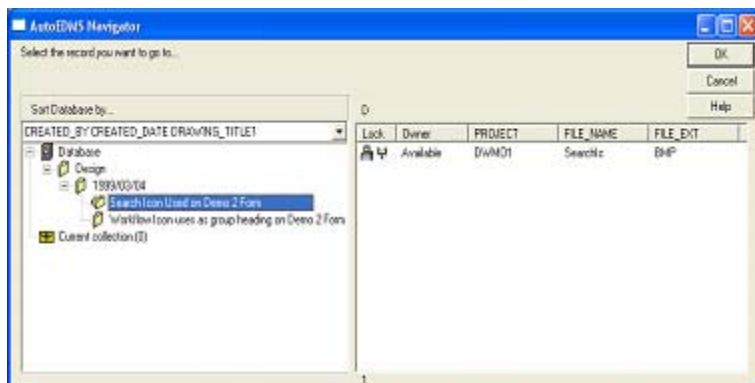


By Keith Bowles, ACS Software, Inc.

In this edition, we will temporarily take a break from ACLs to help you take full advantage of some key features of AutoEDMS v6.5. I have found that many clients moving from a previous version of AutoEDMS (pre 6.5) to version 6.5 have failed to take advantage of two new features — the AutoEDMS Navigator and the improved FastFind feature released in 6.5 Service Release One. As always, remember to make plans now to attend our System Administrator Training Seminar in February!

AutoEDMS Navigator

AutoEDMS Navigator is a new feature that allows you to specify two keys, up to five fields deep, to navigate the record database. The AutoEDMS Navigator keys are available via the “Sort Database by . . .” drop down list.



Remember to back up your environment prior to changing your AutoEDMS system! The creation of navigation keys will cause your database to be rebuilt, so make sure no users are in the system by putting AutoEDMS into Maintenance mode, and checking via AutoEDMS Administrator that all users are out of the system. Then, open your Form and utilize QwikForm’s Applet pull-down – Navigation Key Maker to setup

your secondary and tertiary keys. You can specify up to five fields deep on each, but the total length of all the fields cannot be more than 249 characters. Utilize the Len: to determine the length of your navigation key.



Once you have specified your keys, you can save your Form, which will tell you that you are recreating your database, and you can utilize QwikForm to transfer the data from the old Form to the new Form. Refer to AutoEDMS Documentation – *Customization & Development Manual, Part 1* – Form Development Tools – QwikForm Instructions – Editing the Database Table – Changing the Database Structure for more information about rebuilding your database table.

AutoEDMS FastFind

AutoEDMS FastFind has been around for many past releases of AutoEDMS, however, in v6.5 Service Release One, the FastFind feature was improved. Now, not only can you search on the field you specified in the Form’s design, but you can also search on any indexed field in your AutoEDMS database. The “in field” drop down allows you to select a field to search. The collection button will populate the “current collection” with the results of the FastFind search.

ACS Software, Inc.
2463 208th St.
Suite #202
Torrance, CA 90501-6238
USA

PH: (310) 755-6040
FX: (310) 755-6050

[Web](#)
www.acssoftware.com

[EMail](#)
info@acssoftware.com

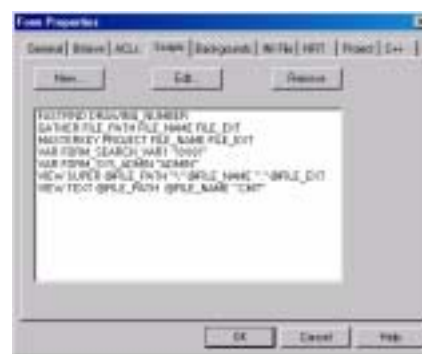
Ask the ACL Doctor . . . continued from page 3

Many clients have the FastFind option grayed out on the Search menu of AutoEDMS. Here's how to add the FastFind feature to your Form. First, remember to back-up your environment

prior to any changes to your AutoEDMS system! Open your Form with QwikForm, and select the File pull-down's Form

Properties item. Select the Scripts tab. You must setup a default field for the FastFind feature and we will use the FILE_NAME field. Select the New button and type "FASTFIND FILE_NAME" in the dialog box (omit the

quotes), then select OK. The script FASTFIND FILE_NAME will be added to the



list of scripts. Select OK, and save your Form. When you return to AutoEDMS and open up the Form you

modified, the FastFind option should now be available under the Search pull-down.

Please remember that a wealth of knowledge is included with AutoEDMS in our online manuals you'll find in the "Documentation" branch of the AutoEDMS InfoCenter. For detailed information on ACL commands and program libraries, check out the *API (ACL) Programmer's Reference Manual*. **End**